

Shape

by Sophia

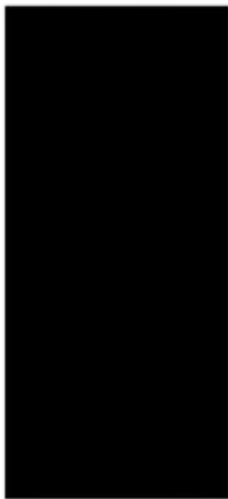


WHAT'S COVERED

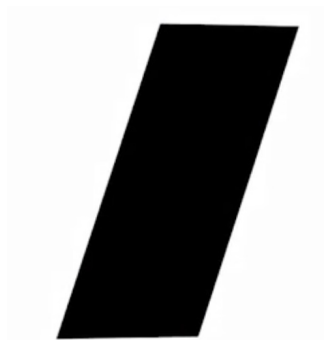
In this lesson, you will learn about the shape element and its use in the visual design process. Specifically, this lesson will cover:

1. Defining Shape

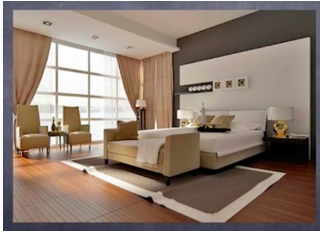
Unlike form, a **shape** is a **two-dimensional plane** with a clear, identifiable boundary.



A plane is an area within a two-dimensional surface that extends to a specific direction or position. The plane is a particular kind of shape; it's the area between the two-dimensional surface. A plane can be parallel or skewed and recede into space.



Ceilings, walls, floors, and windows are all good examples of physical planes, as you can see in the image below.



TERMS TO KNOW

Shape

A two-dimensional plane with a clear, identifiable boundary.

Two-Dimensional

Having two coordinates: width and height.

Plane

An area within a two-dimensional surface that extends to a specific direction or position; a particular kind of shape.

2. Shape Variant

Shape is a variant. The term **shape variation** relates to the diverse range of contours that can be implemented on the boundary of a shape, such as angular, curvy, and straight.



Look at the **rectilinear** shapes above. A rectilinear shape is a shape that is characterized by straight lines.



Now refer to the **curvilinear** images above and below, which are characterized by curvy lines for boundaries.



TERMS TO KNOW

Shape Variation

The diverse range of contours that can be implemented on the boundary of a shape, such as angular, curvy, and straight.

Rectilinear

A shape that is characterized by straight lines.

Curvilinear

A shape that is characterized by curvy lines for boundaries.



SUMMARY

This lesson was about **defining shape** as a two-dimensional plane with a clear, identifiable boundary. You also learned about *shape variants, which are the diverse range of contours that can form the boundary of a shape, such as angular, curvy, and straight.*

Keep up the learning and have a great day!

Source: THIS WORK IS ADAPTED FROM SOPHIA AUTHOR MARIO E. HERNANDEZ



TERMS TO KNOW

Curvilinear

A shape that is characterized by curvy lines for boundaries.

Plane

An area within a two-dimensional surface that extends to a specific direction or position; a particular kind of shape.

Rectilinear

A shape that is characterized by straight lines.

Shape

A two-dimensional plane with a clear, identifiable boundary.

Shape Variation

The diverse range of contours that can be implemented on the boundary of a shape, such as angular, curvy, and straight.

Two-Dimensional

Having two coordinates: width and height.