

Weight & Width

by Sophia



WHAT'S COVERED

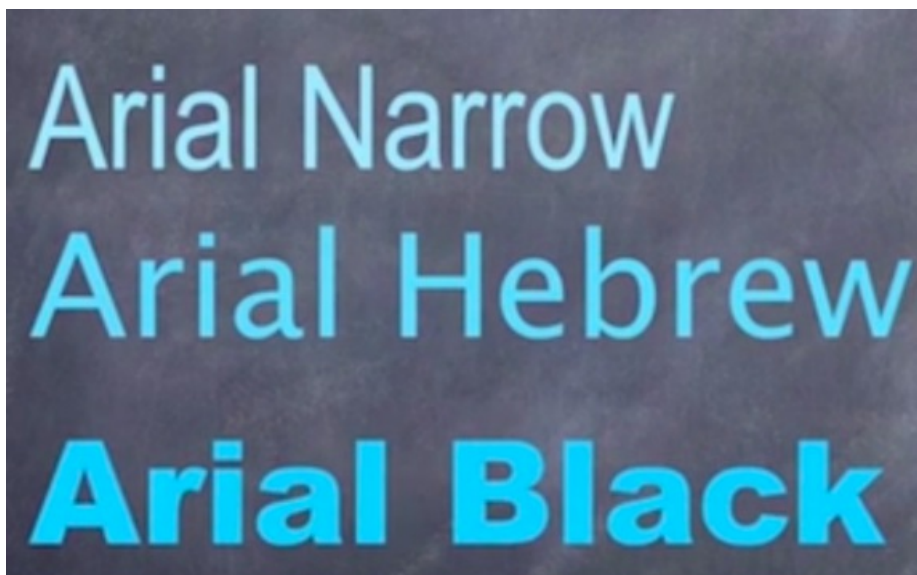
In this lesson, you'll learn to distinguish between different type weights and widths. Specifically, this lesson will cover:

1. Type Weight

Type weight is the thickness of a letter stroke. In the image below, you have examples of **light**, **regular**, and **bold** weights.



Regular is the normal weight of a typeface. Light is a weight that is thinner than regular, while bold is a weight that is thicker than regular.



If you look at the example above of the Arial type family, you can see each member has its own defined type weight. Also notice that the names often correspond to the weight and width of the typeface.

The terms for type weight and type width are added to the type family name to create the full typeface name. If the term regular isn't part of a typeface name, it's typically implied.



TERMS TO KNOW

Type Weight

The thickness of a letter stroke.

Regular

The normal weight of a typeface.

Light

A weight of a typeface that is thinner than regular.

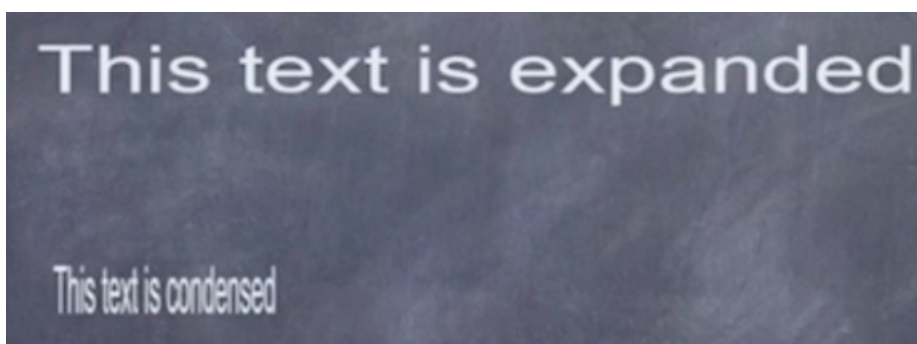
Bold

A weight of a typeface that is thicker than regular.

2. Type Width

Type width looks at **expanded** and **condensed** text.

As you can see in the example below, expanded typefaces take up more space along the baseline, while condensed typefaces take up less space along the baseline.



Designers can actually use a command called **set width** in computer graphics applications. This command will condense or expand type along the baseline.

However, it's best practice to buy the expanded or condensed members of a type family, as opposed to using the set width command in a computer graphics program.

Condensed and extended members of a type family are thoughtfully crafted and designed, so you're going to end up with different results if you simply use the set width command.



TERMS TO KNOW

Expanded

Part of a typeface name that describes width; expanded typefaces take up more space along the baseline.

Condensed

Part of a typeface name that describes width; condensed typefaces take up less space along the baseline.

Set Width

A command in a computer graphics application that condenses or expands type along the baseline.



SUMMARY

In this lesson, you learned about the differences between regular, bold, and light **type weight**. You also looked at expanded and condensed text as examples of **type width**.

Keep up the learning and have a great day!

Source: THIS WORK IS ADAPTED FROM SOPHIA AUTHOR MARIO E. HERNANDEZ



TERMS TO KNOW

Bold

A weight of a typeface that is thicker than regular.

Condensed

Part of a typeface name that describes width; condensed typefaces take up less space along the baseline.

Expanded

Part of a typeface name that describes width; expanded typefaces take up more space along the baseline.

Light

A weight of a typeface that is thinner than regular.

Regular

The normal weight of a typeface.

Set Width

A command in a computer graphics application that condenses or expands type along the baseline.

Type Weight

The thickness of a letter stroke.